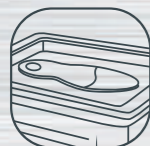


# THERMOTEC

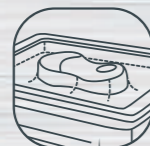


## *MORE TECHNOLOGICAL AND VERSATILE*

Thermotec combines a heating and pressing plate, a digital control panel with LCD screen and two external vacuum outlets in a single compact concept.



THERMOWELDING



THERMOFORMING



DIRECT ADAPTATION IN  
CORRECTED POSITION



DIRECT ADAPTATION IN  
NEUTRAL POSITION



DIRECT ADAPTATION IN  
DYNAMICS



#### Multipoint heating

The heat plate has a high quality nonstick and is made from aluminum, reinforced with titanium particles that absorbs energy to the maximum, heats quickly and distributes heat optimally throughout the work surface (360 x 270 mm.)



#### High-performance vacuum

Thermotec incorporates an innovative "Maxpress" system based on a high-performance vacuum pump without maintenance, which provides optimal vacuum levels for a perfect fusion and adaptation of any type of material. It also allows the vacuum to be carried out simultaneously in the upper chamber and in the external outlets



#### Multiple connections

In the back, it includes two external vacuum outlets, which allow the orthotic to be molded directly on the patient's foot and the connection of vacuum cushions and other accessories of the Namrol range. The pedal allows a controlled vacuum, leaving the hands free for a more precise work.



#### Intelligent Control

The digital control panel with LCD screen allows total control of all functions such as: individual temperature, time and vacuum level regulation, and adjustment of the three work programs that it incorporates.

#### MAXIMUM FLEXIBILITY

Pressing plate with high resistance silicone membrane and Unifix closing system without the need for anchoring. The **wide work surface** supports insoles up to a number 52.